

Seismic Grade Reinforcing Mesh

SE92DE SI

Mesh Specification

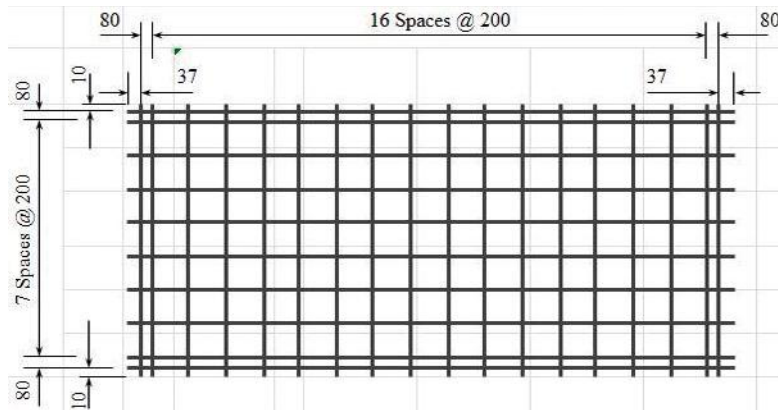
Product Description: 6.435m x 2.38m — 200 x 200 Grid R9.0 Line Wire, R9.0 Cross Wire

	Wire Dia. (mm)	Spacing (mm)	Length (mm)	No. of Wires	Overhangs (mm)		mm ² /m	Wire kg/m	Weight (kg)
Longitudinal Wire	9.0 R	200	6435	10	37	37	318.1	0.4994	32.17
Edge Wire	6.1 R	80	6435	4	37	37		0.2294	5.92
Cross Wire	9.0 R	200	2380	34	10	10	318.1	0.4994	40.45

GROSS SHEET WEIGHT (Kg): 78.54

MASS PER SQ METER (Kg/m²): 4.994

Mesh Sketch (not to scale)

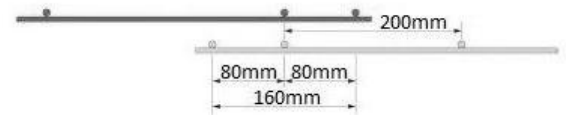


GROSS SHEET AREA (m ²)	15.315
NETT COVER (m ²)	13.58
Ratio STACK & TURNED (Y/N):	Y
No. OF SHEETS / BUNDLE: 2	25
ESTIMATED CUBIC (m ³)	0.2068
BUNDLE WEIGHT (Tonnes):	1.9635

Mechanical Properties (characteristic values)

Uniform Elongation %	Yield Strength		Tensile Ratio	
	Min	Max	Min	Max
≥ 10 %	500MPa	600MPa	1.15	1.4

Minimum weld shear strength 15.9kN



Product is fully tested for conformance to AS/NZS 4671:2001 and B1/VM1 paragraph 14-.

*All measurements/weights approximate.

Mesh App:

Download our free smart-phone app by visiting the Apple or Google stores. Alternatively, scan the QR code from your phone to download directly.

