

# Seismic Grade Reinforcing Mesh

**SE82DE SI**

## Mesh Specification

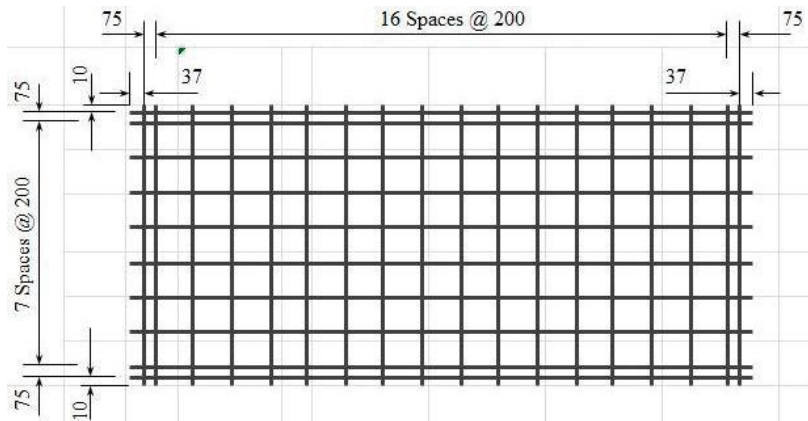
Product Description: 6.425m x 2.37m — 200 x 200 Grid R8.0 Line Wire, R8.0 Cross Wire

	Wire Dia. (mm)	Spacing (mm)	Length (mm)	No. of Wires	Overhangs (mm)		mm <sup>2</sup> /m	Wire kg/m	Weight (kg)
<b>Longitudinal Wire</b>	8.0 R	200	6425	10	37	37	251.3	0.3946	25.38
<b>Edge Wire</b>	5.5 R	75	6425	4	37	37		0.1865	4.81
<b>Cross Wire</b>	8.0 R	200	2370	34	10	10	251.3	0.3946	31.84

**GROSS SHEET WEIGHT (Kg):** 62.03

**MASS PER SQ METER (Kg/m<sup>2</sup>):** 3.946

## Mesh Sketch (not to scale)

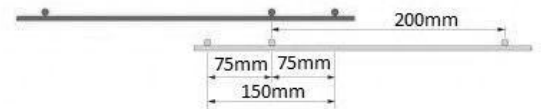


GROSS SHEET AREA (m <sup>2</sup> )	15.227
NETT COVER (m <sup>2</sup> )	13.642
Ratio STACK & TURNED (Y/N):	Y
No. OF SHEETS / BUNDLE: 2	25
ESTIMATED CUBIC (m <sup>3</sup> )	0.1827
BUNDLE WEIGHT (Tonnes):	1.5507

## Mechanical Properties (characteristic values)

Uniform Elongation %	Yield Strength		Tensile Ratio	
	Min	Max	Min	Max
≥ 10 %	500MPa	600MPa	1.15	1.4

Minimum weld shear strength 12.6kN



Product is fully tested for conformance to AS/NZS 4671:2001 and B1/VM1 paragraph 14-.

\*All measurements/weights approximate.

### Mesh App:

Download our free smart-phone app by visiting the Apple or Google stores. Alternatively, scan the QR code from your phone to download directly.

