

Seismic Grade Reinforcing Mesh

SE72DE SI

Mesh Specification

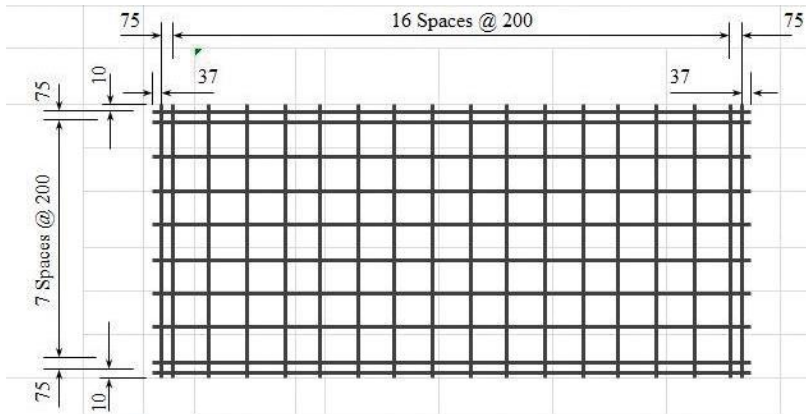
Product Description: 6.425m x 2.37m — 200 x 200 Grid R7.0 Line Wire, R7.0 Cross Wire

	Wire Dia. (mm)	Spacing (mm)	Length (mm)	No. of Wires	Overhangs (mm)		mm ² /m	Wire kg/m	Weight (kg)
Longitudinal Wire	7.0 R	200	6425	10	37	37	192.4	0.3021	19.44
Edge Wire	5.5 R	75	6425	4	37	37		0.1865	4.81
Cross Wire	7.0 R	200	2370	34	10	10	192.4	0.3021	24.38

GROSS SHEET WEIGHT (Kg): 48.63

MASS PER SQ METER (Kg/m²): 3.021

Mesh Sketch (not to scale)

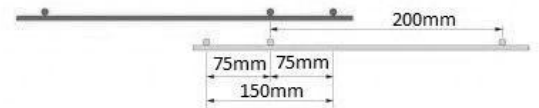


GROSS SHEET AREA (m ²)	15.227
NETT COVER (m ²)	13.642
Ratio STACK & TURNED (Y/N):	Y
No. OF SHEETS / BUNDLE: 2	25
ESTIMATED CUBIC (m ³)	0.1599
BUNDLE WEIGHT (Tonnes):	1.2158

Mechanical Properties (characteristic values)

Uniform Elongation %	Yield Strength		Tensile Ratio	
	Min	Max	Min	Max
≥ 10 %	500MPa	600MPa	1.15	1.4

Minimum weld shear strength 9.6kN



Product is fully tested for conformance to AS/NZS 4671:2001 and B1/VM1 paragraph 14-.

*All measurements/weights approximate.

Mesh App:

Download our free smart-phone app by visiting the Apple or Google stores. Alternatively, scan the QR code from your phone to download directly.

