

# Seismic Grade Reinforcing Mesh

**SE72DE SI**

## Mesh Specification

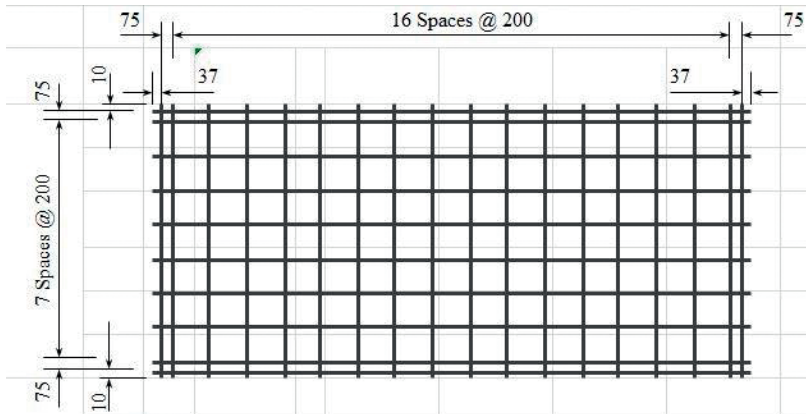
Product Description: 6.425m x 2.37m — 200 x 200 Grid R7.0 Line Wire, R7.0 Cross Wire

	Wire Dia. (mm)	Spacing (mm)	Length (mm)	No. of Wires	Overhangs (mm)		mm <sup>2</sup> /m	Wire kg/m	Weight (kg)
<b>Longitudinal Wire 1</b>	7.0 R	200	6425	10	37	37	192.4	0.3021	19.44
<b>Longitudinal Wire 2</b>	5.50 R	75	6425	4	37	37		0.1865	4.81
<b>Cross Wire</b>	7.0 R	200	2370	34	10	10	192.4	0.3021	24.38

**GROSS SHEET WEIGHT (Kg):** 48.63

**MASS PER SQ METER (Kg/m<sup>2</sup>):** 3.021

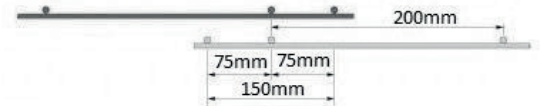
## Mesh Sketch (not to scale)



GROSS SHEET AREA (m <sup>2</sup> )	15.227
NETT COVER (m <sup>2</sup> )	13.642
Ratio STACK & TURNED (Y/N):	Y
No. OF SHEETS / BUNDLE: 2	25
ESTIMATED CUBIC (m <sup>3</sup> )	0.1599
BUNDLE WEIGHT (Tonnes):	1.2158

## Mechanical Properties

Uniform Elongation %	Yield Strength		Tensile Ratio		Weld Shear Strength
	Min	Max	Min	Max	
≥ 10 %	500MPa	600MPa	1.15	1.4	> 9.6



Product is fully tested for Grade 500E compliance as per AS/NZS 4671:2001  
\*All measurements/weights approximate.

