

Seismic Grade Reinforcing Mesh

SE62 SI

Mesh Specification

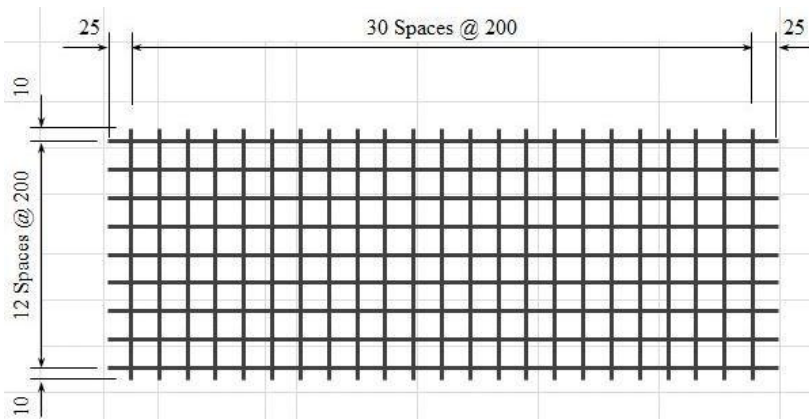
Product Description: 6.05m x 2.42m — 200 x 200 Grid R6.1 Line Wire, R6.1 Cross Wire

	Wire Dia. (mm)	Spacing (mm)	Length (mm)	No. of Wires	Overhangs (mm)		mm ² /m	Wire kg/m	Weight (kg)
Longitudinal Wire	6.1 R	200	6050	13	25	25	146.1	0.2294	18.08
Cross Wire	6.1 R	200	2420	31	10	10	146.1	0.2294	17.25

GROSS SHEET WEIGHT (Kg): 35.33

MASS PER SQ METER (Kg/m²): 2.294

Mesh Sketch (not to scale)

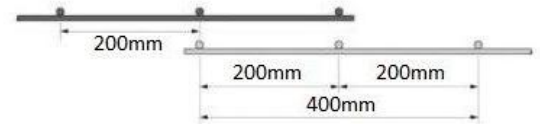


GROSS SHEET AREA (m ²)	14.641
NETT COVER (m ²)	12.76
Ratio STACK & TURNED (Y/N):	Y
No. OF SHEETS / BUNDLE: 2	25
ESTIMATED CUBIC (m ³)	2.3221
BUNDLE WEIGHT (Tonnes):	0.8833

Mechanical Properties (characteristic values)

Uniform Elongation %	Yield Strength		Tensile Ratio	
	Min	Max	Min	Max
≥ 10 %	500MPa	600MPa	1.15	1.4

Minimum weld shear strength 7.3kN



Product is fully tested for conformance to AS/NZS 4671:2001 and B1/VM1 paragraph 14-.

*All measurements/weights approximate.

Mesh App:

Download our free smart-phone app by visiting the Apple or Google stores. Alternatively, scan the QR code from your phone to download directly.

