

Seismic Grade Reinforcing Mesh

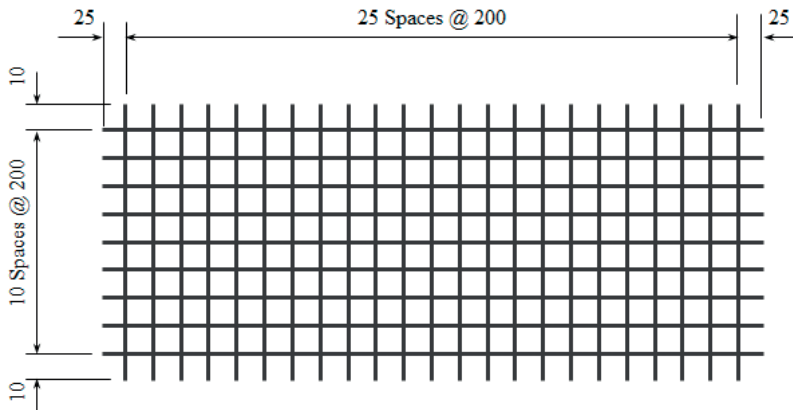
SE62 Res SI

Mesh Specification

Product Description: 5.05m x 2.02m — 200 x 200 Grid R6.1 Line Wire, R6.1 Cross Wire

	Wire Dia. (mm)	Spacing (mm)	Length (mm)	No. of Wires	Overhangs (mm)		mm ² /m	Wire kg/m	Weight (kg)
Longitudinal Wire	6.1 R	200	5050	11	25	25	146.1	0.2294	12.77
Cross Wire	6.1 R	200	2020	26	10	10	146.1	0.2294	12.07
GROSS SHEET WEIGHT (Kg):									24.84
MASS PER SQ METER (Kg/m²):									2.294

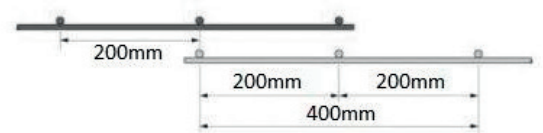
Mesh Sketch (not to scale)



GROSS SHEET AREA (m ²)	10.201
NETT COVER (m ²)	8.64
Ratio STACK & TURNED (Y/N):	Y
No. OF SHEETS / BUNDLE:	25
ESTIMATED CUBIC (m ³)	0.0933
BUNDLE WEIGHT (Tonnes):	0.6211

Mechanical Properties

Uniform Elongation %	Yield Strength		Tensile Ratio		Weld Shear Strength
	Min	Max	Min	Max	
≥ 10 %	500MPa	600MPa	1.15	1.4	7.3



Product is fully tested for Grade 500E compliance as per AS/NZS 4671:2001
*All measurements/weights approximate.

