

# Hard Drawn Reinforcing Mesh

**84/10 SI**

## Mesh Specification

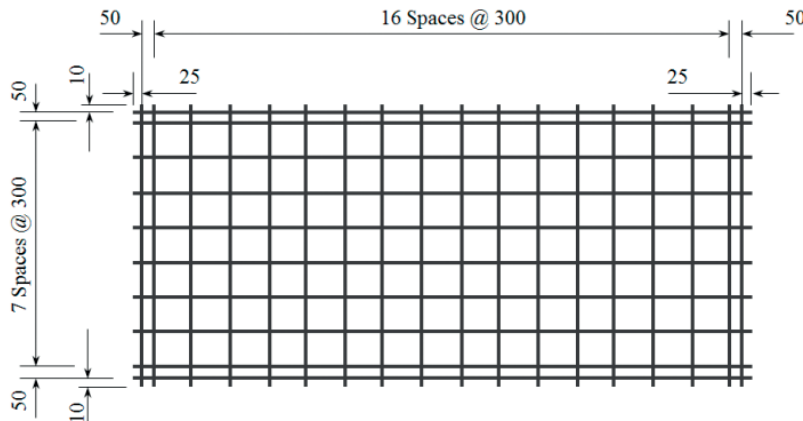
Product Description: 4.95m x 2.22m — 300 x 300 Grid D5.6 Line Wire, D5.6 Cross Wire

	Wire Dia. (mm)	Spacing (mm)	Length (mm)	No. of Wires	Overhangs (mm)		mm <sup>2</sup> /m	Wire kg/m	Weight (kg)
<b>Longitudinal Wire 1</b>	5.6 R	300	4950	6	25	25	82.1	0.1933	5.74
<b>Longitudinal Wire 2</b>	4.0 R	50	4950	4	25	25		0.0986	1.95
<b>Cross Wire</b>	5.6 R	300	2220	19	10	10	82.1	0.1933	8.15

**GROSS SHEET WEIGHT (Kg):** 15.85

**MASS PER SQ METER (Kg/m<sup>2</sup>):** 1.289

## Mesh Sketch (not to scale)



GROSS SHEET AREA (m<sup>2</sup>) 10.989

NETT COVER (m<sup>2</sup>) 10.08

Ratio STACK & TURNED (Y/N): Y

No. OF SHEETS / BUNDLE: 25

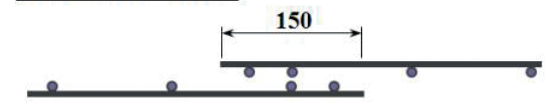
ESTIMATED CUBIC (m<sup>3</sup>) 0.0923

BUNDLE WEIGHT (Tonnes): 0.3962

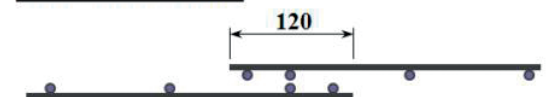
## Mechanical Properties

Wire Diam	Uniform Elongation %	0.2% Proof Stress		Ratio R <sub>m</sub> / R <sub>e</sub>
		Min	Max	
< 5.0mm	≥ 1.5%	485MPa		≥ 1.03%
≥ 5.0mm	≥ 1.5%	485MPa	750MPa	≥ 1.03%

### LAPPING ON ENDS



### LAPPING ON SIDES



\*All measurements/weights approximate.

