

# Hard Drawn Reinforcing Mesh

**663L SI**

## Mesh Specification

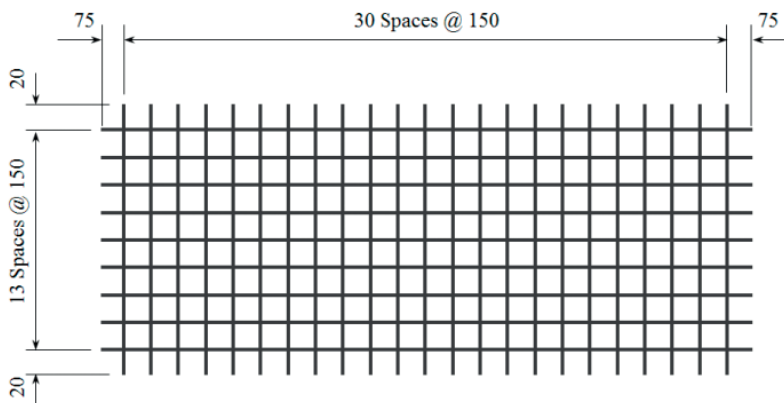
Product Description: 4.65m x 1.97m — 150 x 150 Grid D6.3 Line Wire, D6.3 Cross Wire

	Wire Dia. (mm)	Spacing (mm)	Length (mm)	No. of Wires	Overhangs (mm)		mm <sup>2</sup> /m	Wire kg/m	Weight (kg)
<b>Longitudinal Wire</b>	6.3 D	150	4650	14	75	75	207.8	0.2447	15.93
<b>Cross Wire</b>	6.3 D	150	1970	31	10	10	207.8	0.2447	14.94

**GROSS SHEET WEIGHT (Kg):** 30.87

**MASS PER SQ METER (Kg/m<sup>2</sup>):** 3.263

## Mesh Sketch (not to scale)

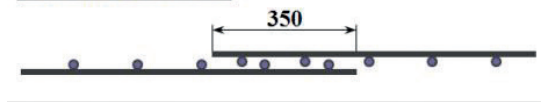


GROSS SHEET AREA (m <sup>2</sup> )	9.161
NETT COVER (m <sup>2</sup> )	7.525
Ratio STACK & TURNED (Y/N):	Y
No. OF SHEETS / BUNDLE: 2	25
ESTIMATED CUBIC (m <sup>3</sup> )	0.0866
BUNDLE WEIGHT (Tonnes):	0.7719

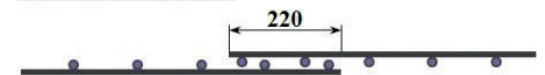
## Mechanical Properties

Wire Diam	Uniform Elongation %	0.2% Proof Stress		Ratio Rm / Re
		Min	Max	
< 5.0mm	≥ 1.5%	485MPa		≥ 1.03%
≥ 5.0mm	≥ 1.5%	485MPa	750MPa	≥ 1.03%

### LAPPING ON ENDS



### LAPPING ON SIDES



\*All measurements/weights approximate.

### Mesh App:

Download our free smart-phone app by visiting the Apple or Google stores. Alternatively, scan the QR code from your phone to download directly.

