

Seismic Grade Reinforcing Mesh SE73DE NI



Mesh Specification

Product Description: 5.0m x 2.27m – 300 x 300 Grid R7.5 Line Wire, R7.5 Cross Wire.
Product is fully tested for conformance to AS/NZS 4671:2019.

	Wire Dia. (mm)	Spacing (mm)	Length (mm)	No. of Wires	Overhangs (mm)	mm ² /m	Wire (kg/m)	Weight (kg)
Longitudinal Wire	7.5 R	300	5000	8	25	147.3	0.3468	13.87
Edge Wire	5.5 R	75	5000	2	25		0.1865	1.87
Cross Wire	7.5 R	300	2270	19	10	147.3	0.3468	14.96

Gross Sheet Weight (kg):	30.69
Mass Per Square Meter (kg/m ²):	2.312
Gross Sheet Area (m ²)	11.35
Nett Cover (m ²)	10.08

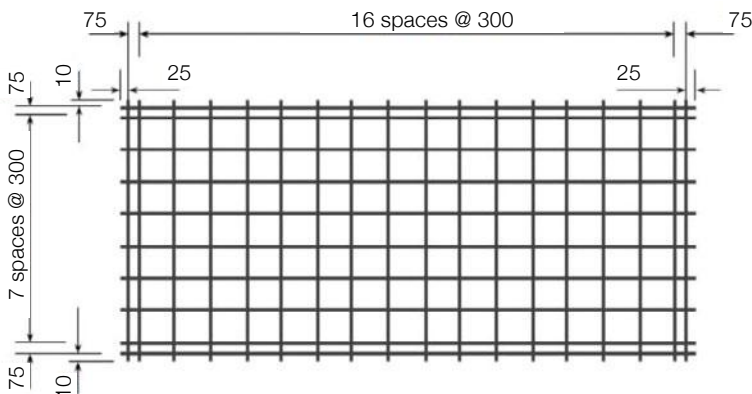
Ratio Stack & Turned (Y/N):	Y
No. of Sheets / Bundle: 2	20
Estimated Cubic (m ³)	0.1277
Bundle Weight (Tonnes):	0.6139

Mechanical Properties (characteristic values)

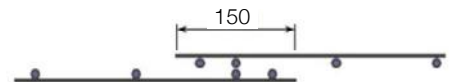
Uniform Elongation %	Yield Strength		Tensile Ratio	
	Min	Max	Min	Max
≥ 10 %	500MPa	600MPa	1.15	1.4

Minimum weld shear strength 11.1kN

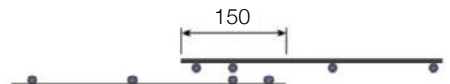
Mesh Sketch (not to scale)



Lapping on Ends:



Lapping on Sides:



*All measurements/weights approximate.