

# Seismic Grade Reinforcing Mesh

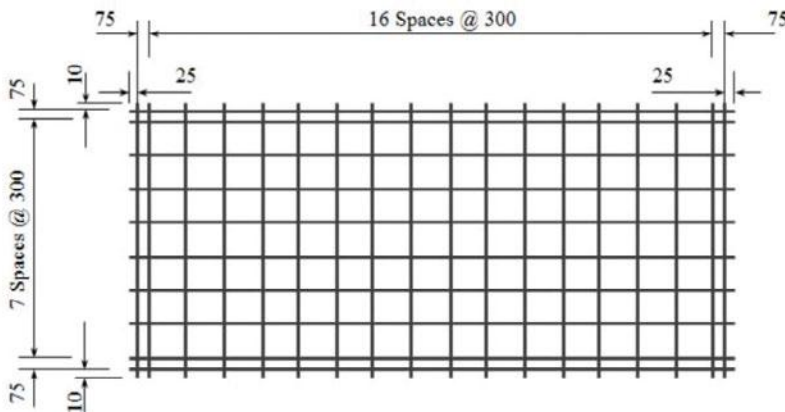
## SE73DE NI

### Mesh Specification

Product Description: 5.0m x 2.27m — 300 x 300 Grid R7.5 Line Wire, R7.5 Cross Wire

	Wire Dia. (mm)	Spacing (mm)	Length (mm)	No. of Wires	Overhangs (mm)		mm <sup>2</sup> /m	Wire kg/m	Weight (kg)
<b>Longitudinal Wire</b>	7.5 R	300	5000	8	25	25	147.3	0.3468	13.87
<b>Edge Wire</b>	5.5 R	75	5000	2	25	25		0.1865	1.87
<b>Cross Wire</b>	7.5 R	300	2270	19	10	10	147.3	0.3468	14.96
<b>GROSS SHEET WEIGHT (Kg):</b>									30.69
<b>MASS PER SQ METER (Kg/m<sup>2</sup>):</b>									2.312

### Mesh Sketch (not to scale)



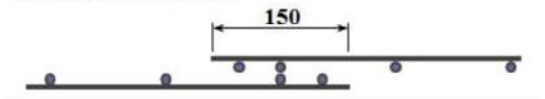
GROSS SHEET AREA (m <sup>2</sup> )	11.35
NETT COVER (m <sup>2</sup> )	10.08
Ratio STACK & TURNED (Y/N):	Y
No. OF SHEETS / BUNDLE: 2	20
ESTIMATED CUBIC (m <sup>3</sup> )	0.1277
BUNDLE WEIGHT (Tonnes):	0.6139

### Mechanical Properties (characteristic values)

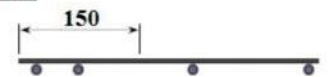
Uniform Elongation %	Yield Strength		Tensile Ratio	
	Min	Max	Min	Max
≥ 10 %	500MPa	600MPa	1.15	1.4

Minimum weld shear strength 11.1kN

#### LAPPING ON ENDS



#### LAPPING ON SIDES



Product is fully tested for conformance to AS/NZS 4671:2001 and B1/VM1 paragraph 14-.

\*All measurements/weights approximate.

#### Mesh App:

Download our free smart-phone app by visiting the Apple or Google stores. Alternatively, scan the QR code from your phone to download directly.

