

# Seismic Grade Reinforcing Mesh

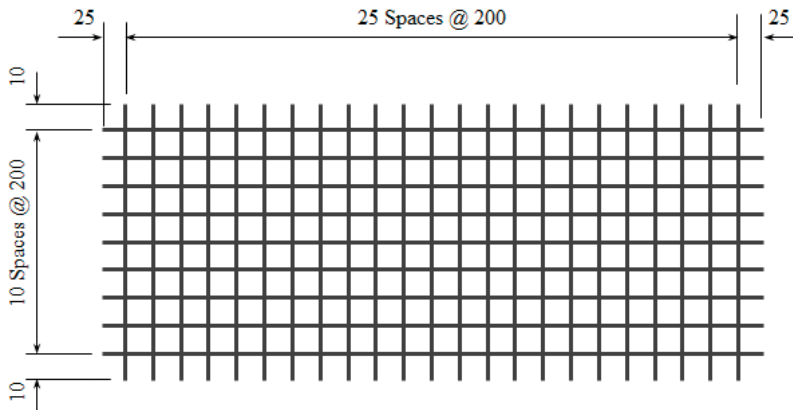
# SE62 Res NI

## Mesh Specification

Product Description: 5.05m x 2.02m — 200 x 200 Grid R6.1 Line Wire, R6.1 Cross Wire

	Wire Dia. (mm)	Spacing (mm)	Length (mm)	No. of Wires	Overhangs (mm)		mm <sup>2</sup> /m	Wire kg/m	Weight (kg)
<b>Longitudinal Wire</b>	6.1 R	200	5050	11	25	25	146.1	0.2294	12.74
<b>Cross Wire</b>	6.1 R	200	2020	26	10	10	146.1	0.2294	12.05
<b>GROSS SHEET WEIGHT (Kg):</b>									24.79
<b>MASS PER SQ METER (Kg/m<sup>2</sup>):</b>									2.294

## Mesh Sketch (not to scale)



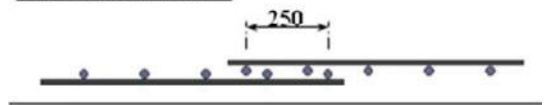
GROSS SHEET AREA (m <sup>2</sup> )	10.201
NETT COVER (m <sup>2</sup> )	8.312
Ratio STACK & TURNED (Y/N):	Y
No. OF SHEETS / BUNDLE: 2	25
ESTIMATED CUBIC (m <sup>3</sup> )	0.0933
BUNDLE WEIGHT (Tonnes):	0.6198

## Mechanical Properties (characteristic values)

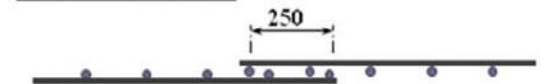
Uniform Elongation %	Yield Strength		Tensile Ratio	
	Min	Max	Min	Max
≥ 10 %	500MPa	600MPa	1.15	1.4

Minimum weld shear strength 7.3kN

### LAPPING ON ENDS



### LAPPING ON SIDES



Product is fully tested for conformance to AS/NZS 4671:2001 and B1/VM1 paragraph 14-.

\*All measurements/weights approximate.

### Mesh App:

Download our free smart-phone app by visiting the Apple or Google stores. Alternatively, scan the QR code from your phone to download directly.

