

Hard Drawn Reinforcing Mesh

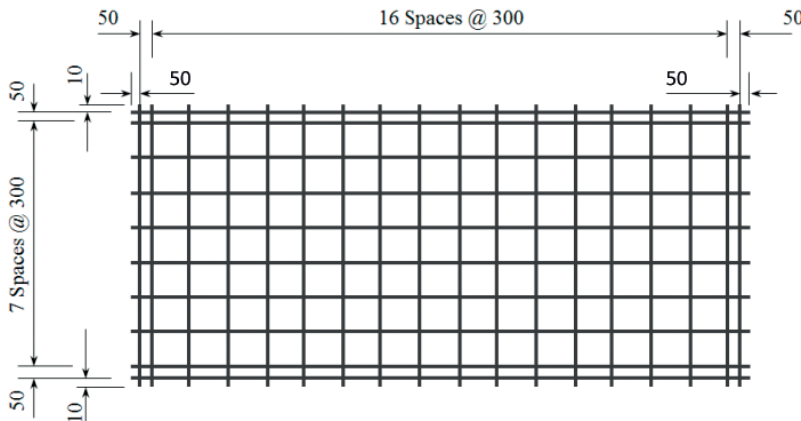
84/10 NI

Mesh Specification

Product Description: 5.0m x 2.24m — 300 x 300 Grid D5.6 Line Wire, D5.6 Cross Wire

	Wire Dia. (mm)	Spacing (mm)	Length (mm)	No. of Wires	Overhangs (mm)		mm ² /m	Wire kg/m	Weight (kg)
Longitudinal Wire 1	5.6 R	300	5000	6	50	50	82.1	0.1933	5.80
Longitudinal Wire 2	4.0 R	50	5000	4	50	50		0.0986	1.97
Cross Wire	5.6 R	300	2240	19	20	20	82.1	0.1933	8.23
GROSS SHEET WEIGHT (Kg):									16.00
MASS PER SQ METER (Kg/m²):									1.289

Mesh Sketch (not to scale)

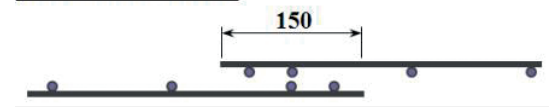


GROSS SHEET AREA (m ²)	11.2
NETT COVER (m ²)	10.08
Ratio STACK & TURNED (Y/N):	Y
No. OF SHEETS / BUNDLE:	25
ESTIMATED CUBIC (m ³) BUNDLE	1.45
BUNDLE WEIGHT (KG):	400

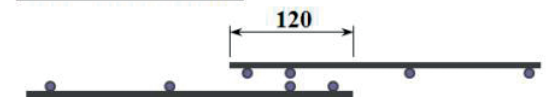
Mechanical Properties

Wire Diam	Uniform Elongation %	0.2% Proof Stress		Ratio Rm / Re
		Min	Max	
5.6 D	≥ 1.5%	485MPa		≥ 1.03%
5.6 D	≥ 1.5%	485MPa	750MPa	≥ 1.03%

LAPPING ON ENDS



LAPPING ON SIDES



*All measurements/weights approximate.

