

Hard Drawn Reinforcing Mesh

663L NI

Mesh Specification

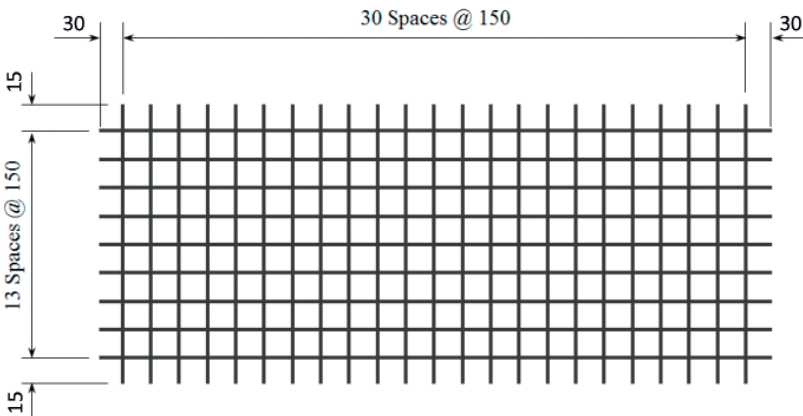
Product Description: 4.56m x 1.98m — 150 x 150 Grid R6.3 Line Wire, R6.3 Cross Wire

	Wire Dia. (mm)	Spacing (mm)	Length (mm)	No. of Wires	Overhangs (mm)		mm ² /m	Wire kg/m	Weight (kg)
Longitudinal Wire	6.3 R	150	4560	14	30	30	207.8	0.2447	15.62
Cross Wire	6.3 R	150	1980	31	15	15	207.8	0.2447	15.10

GROSS SHEET WEIGHT (Kg): 30.72

MASS PER SQ METER (Kg/m²): 3.263

Mesh Sketch (not to scale)

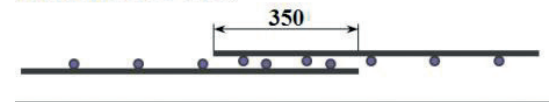


GROSS SHEET AREA (m ²)	9.029
NETT COVER (m ²)	7.525
Ratio STACK & TURNED (Y/N):	Y
No. OF SHEETS / BUNDLE: 2	25
ESTIMATED CUBIC (m ³) BUNDLE	1.94
BUNDLE WEIGHT (Kg):	766

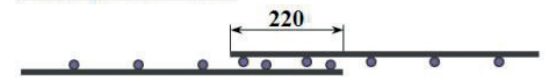
Mechanical Properties

Wire Diam	Uniform Elongation %	0.2% Proof Stress		Ratio Rm / Re
		Min	Max	
6.3mm	≥ 1.5%	485MPa	750MPa	≥ 1.03%
6.3mm	≥ 1.5%	485MPa	750MPa	≥ 1.03%

LAPPING ON ENDS



LAPPING ON SIDES



*All measurements/weights approximate.

Mesh App:

Download our free smart-phone app by visiting the Apple or Google stores. Alternatively, scan the QR code from your phone to download directly.

