

Hard Drawn Reinforcing Mesh

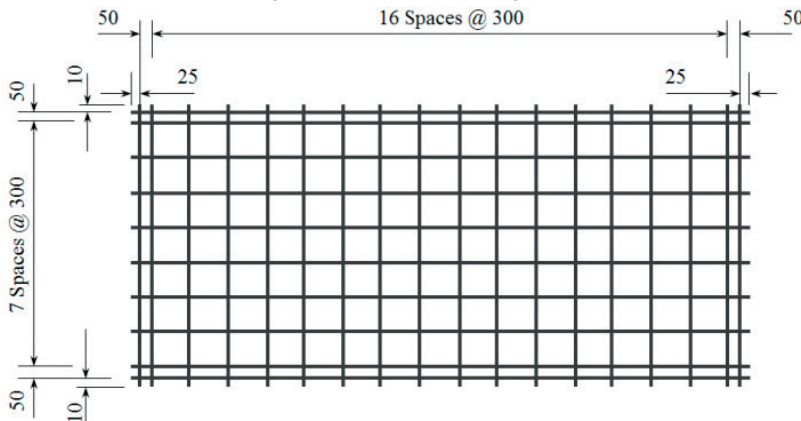
84/10

Mesh Specification

Product Description: 4.95m x 2.22m — 300 x 300 Grid D5.6 Line Wire, D5.6 Cross Wire

	Wire Dia. (mm)	Spacing (mm)	Length (mm)	No. of Wires	Overhangs (mm)	mm ² /m	Wire kg/m	Weight (kg)
Longitudinal Wire 1	5.6 R	300	4950	6	25 25	82.1	0.1933	5.74
Longitudinal Wire 2	4.0 R	50	4950	4	25 25		0.0986	1.95
Cross Wire	5.6 R	300	2220	19	10 10	82.1	0.1933	8.15
GROSS SHEET WEIGHT (Kg):								15.85
MASS PER SQ METER (Kg/m²):								1.289

Mesh Sketch (not to scale)

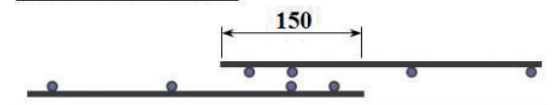


GROSS SHEET AREA (m ²)	10.989
NETT COVER (m ²)	10.08
Ratio STACK & TURNED (Y/N):	Y
No. OF SHEETS / BUNDLE:	25
ESTIMATED CUBIC (m ³)	0.0923
BUNDLE WEIGHT (Tonnes):	0.3962

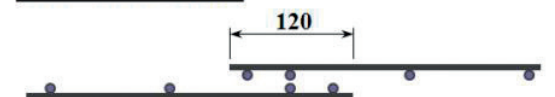
Mechanical Properties

Wire Diam	Uniform Elongation %	0.2% Proof Stress		Ratio Rm / Re
		Min	Max	
< 5.0mm	≥ 1.5%	485MPa		≥ 1.03%
≥ 5.0mm	≥ 1.5%	485MPa	750MPa	≥ 1.03%

LAPPING ON ENDS



LAPPING ON SIDES



*All measurements/weights approximate.

