

# Hard Drawn Reinforcing Mesh

# 668L

## Mesh Specification

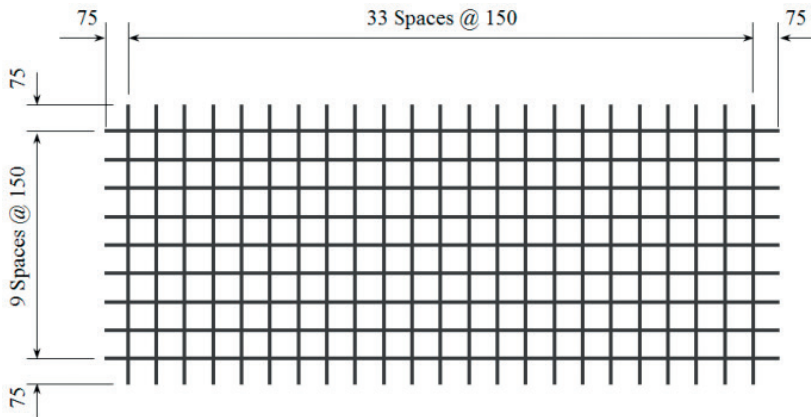
Product Description: 4.65m x 1.97m — 150 x 150 Grid D4.0 Line Wire, D4.0 Cross Wire

	Wire Dia. (mm)	Spacing (mm)	Length (mm)	No. of Wires	Overhangs (mm)	mm <sup>2</sup> /m	Wire kg/m	Weight (kg)
Longitudinal Wire	4.0 D	150	4650	14	75 75	83.8	0.0986	6.42
Cross Wire	4.0 D	150	1970	31	10 10	83.8	0.0986	6.02

**GROSS SHEET WEIGHT (Kg):** 12.44

**MASS PER SQ METER (Kg/m<sup>2</sup>):** 1.315

## Mesh Sketch (not to scale)

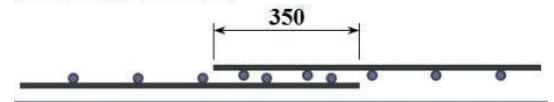


GROSS SHEET AREA (m <sup>2</sup> )	9.161
NETT COVER (m <sup>2</sup> )	7.525
Ratio STACK & TURNED (Y/N):	Y
No. OF SHEETS / BUNDLE: 2	25
ESTIMATED CUBIC (m <sup>3</sup> )	0.0550
BUNDLE WEIGHT (Tonnes):	0.3110

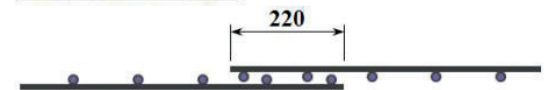
## Mechanical Properties

Wire Diam	Uniform Elongation %	0.2% Proof Stress		Ratio Rm / Re
		Min	Max	
< 5.0mm	≥ 1.5%	485MPa		≥ 1.03%
≥ 5.0mm	≥ 1.5%	485MPa	750MPa	≥ 1.03%

### LAPPING ON ENDS



### LAPPING ON SIDES



\*All measurements/weights approximate.

