

Seismic Grade Reinforcing Mesh

SE73

Mesh Specification

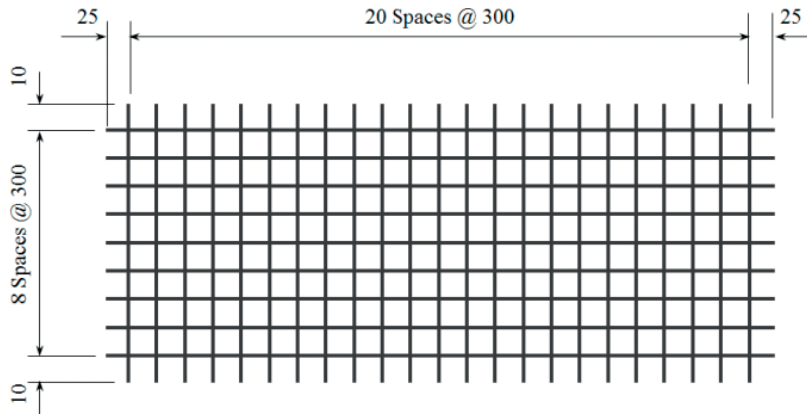
Product Description: 6.05m x 2.42m — 300 x 300 Grid R7.5 Line Wire, R7.5 Cross Wire

	Wire Dia. (mm)	Spacing (mm)	Length (mm)	No. of Wires	Overhangs (mm)	mm ² /m	Wire kg/m	Weight (kg)
Longitudinal Wire	7.5 R	300	6050	9	25 25	147.3	0.3468	18.88
Cross Wire	7.5 R	300	2420	21	10 10	147.3	0.3468	17.62

GROSS SHEET WEIGHT (Kg): 36.51

MASS PER SQ METER (Kg/m²): 2.312

Mesh Sketch (not to scale)



GROSS SHEET AREA (m ²)	14.641
NETT COVER (m ²)	11.582
Ratio STACK & TURNED (Y/N):	Y
No. OF SHEETS / BUNDLE: 2	25
ESTIMATED CUBIC (m ³)	2.8550
BUNDLE WEIGHT (Tonnes):	0.9127

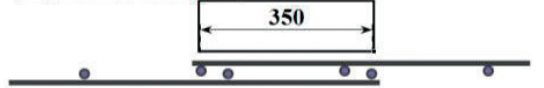
Mechanical Properties

Uniform Elongation %	Yield Strength		Tensile Ratio		Weld Shear Strength
	Min	Max	Min	Max	
≥ 10 %	500MPa	600MPa	1.15	1.4 >	9.6

LAPPING ON ENDS



LAPPING ON SIDES



Mesh App:

Download our free smart-phone app by visiting the Apple or Google stores. Alternatively, scan the QR code from your phone to download directly.

